

15 E HOLLY ST

PASADENA, 91103

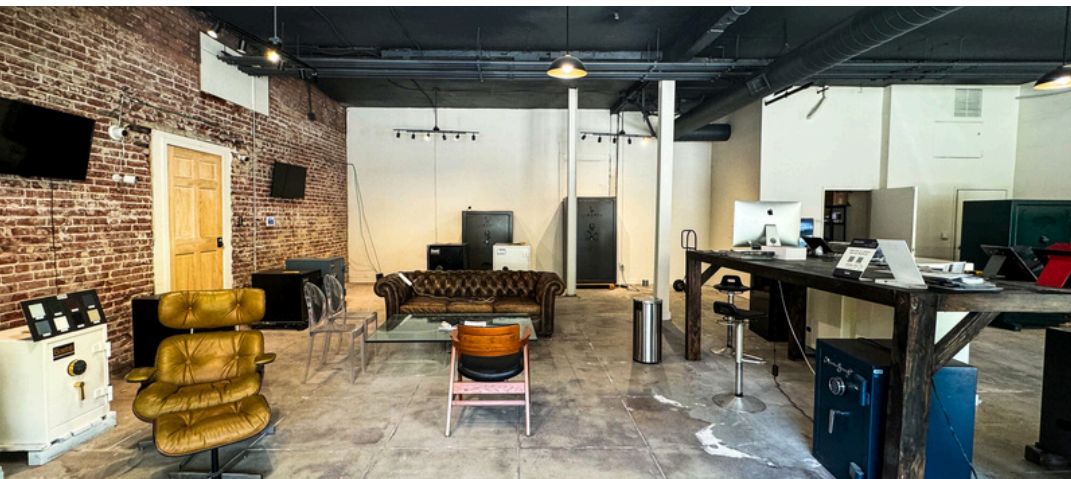
RETAIL FOR SUBLEASE



MACVAUGH & CO
Commercial Real Estate Services

Hoss MacVaugh

626.583.8400 | Hoss@MacVaugh.com



SUBLEASE HIGHLIGHTS

Located on Holly st among various shopping and dining retailers. Direct neighbors include Holy Saints!, Nostalgic Cafe, Maude Woods & Gold Bug. Currently built-out as standard retail. Easy access to the Metro Gold Line & 210/134 freeways.



PRICE

\$3.35 NNN (.65)

SIZE

1,756 SQFT

LAYOUT

Open space with one private restroom & office

FINISHES

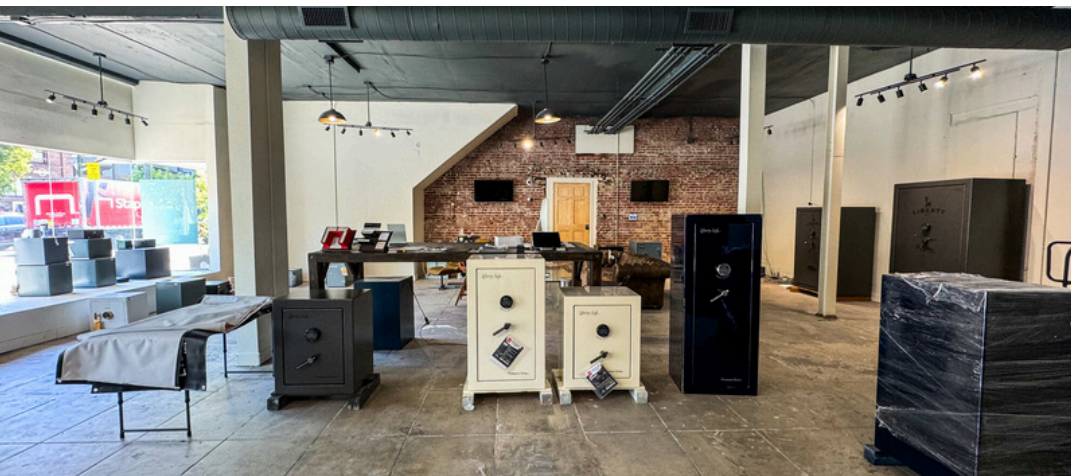
Concrete flooring throughout, high ceilings & exposed brick walls

PARKING

City lots are available

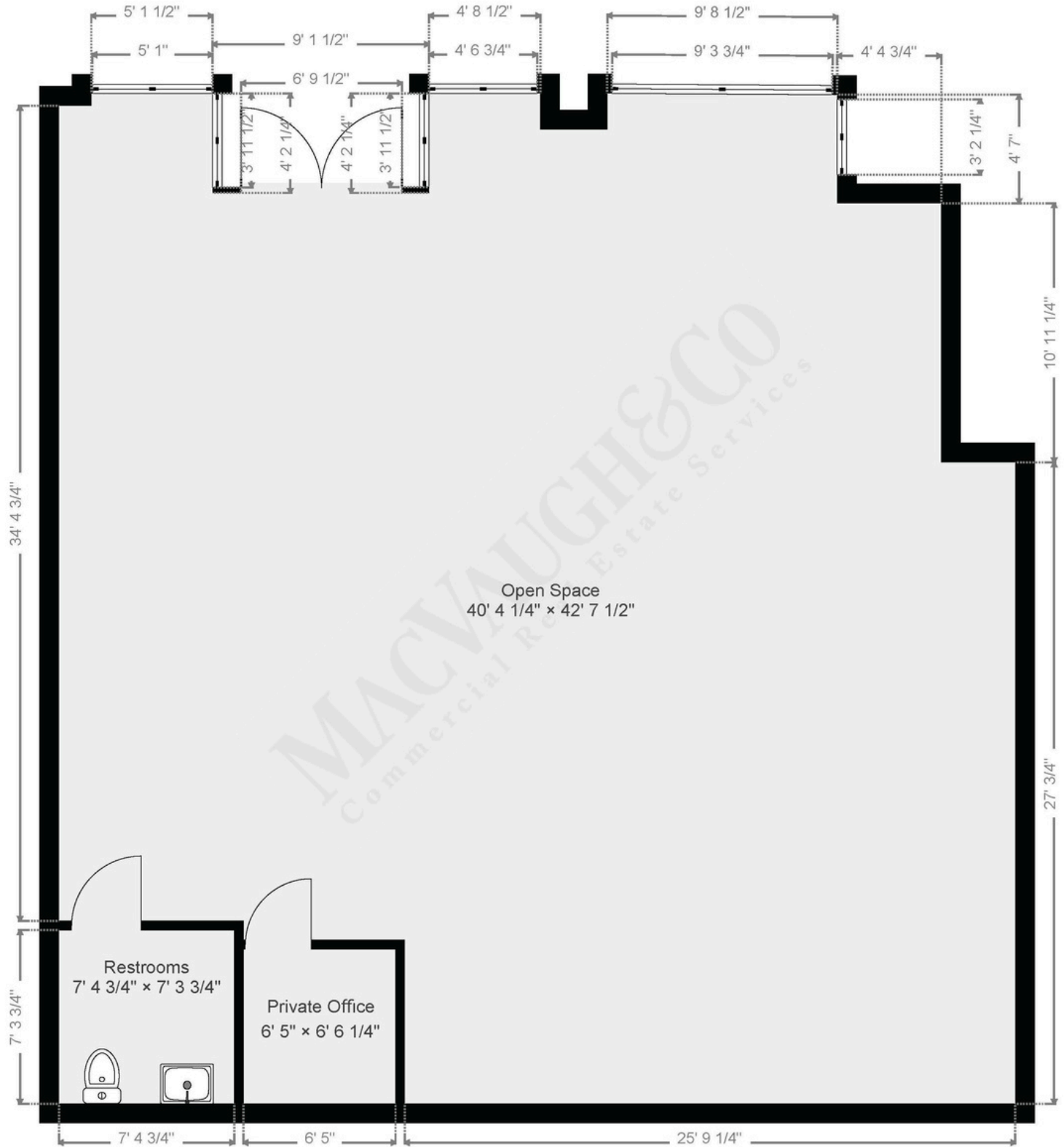
SUBLEASE

Available within 30 days of lease signing. Sublease ends 6/30/28



15 E HOLLY ST:

Approx 1,756 SQFT



PASADENA, CA

CITY INFORMATION

200k population, 110k employees, 127k average household income all within a 3-mile radius

The seasonal population reaches its peak through the Rose Bowl with sports events, concerts and New Years Eve/Day

Ranked as one of the top walking and retail locations in the United States with a walk score of 98 and a bike score of 73

National icons such as Art Center College of Deign, JPL and Cal Tech

Multiple Metro Gold Line stops are located throughout the city - Bringing in people from Azusa to Downtown Santa Monica

You'll find a combination of mom-and-pop shops and major tenants keeping the history of the city alive while bringing a modern day flare

Deeply rooted with history, architecture and art with notable neighbors such as the Norton Simon Museum, City Hall and hundreds of historically significant buildings



Hoss MacVaugh

626.583.8400 | Hoss@MacVaugh.com | #00971669